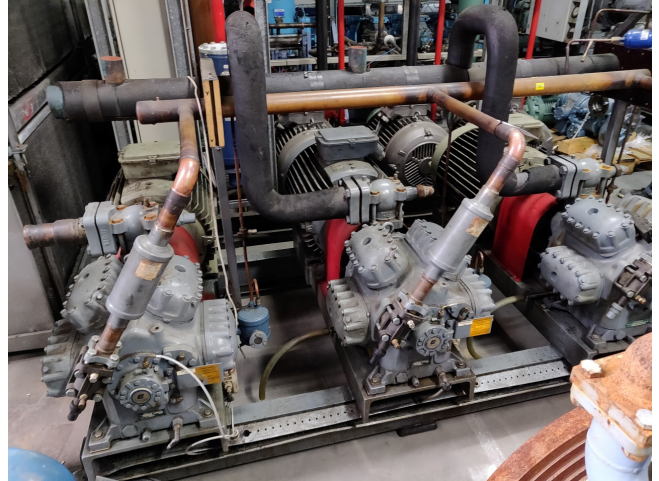


## DWM 8 CC 75 (x3) package

### Specifications

Marka	DWM
Typ	8 CC 75 (x3) package
Czynnik chłodzący	Freon
Silnik elektryczny Specs	37 kW at 1475 RPM (x3)
Podstawa na stalowej ramie	✓
Obiornik cieczy	✓
Separator oleju	✓
Poziom oleju w systemie	✓
Package / Rack	✓
Stock	1



### Description

#### Used DWM 8 CC 75 (x3) package

Used DWM - copeland 8 CC 75 (x3) compressor package with electromotor 37 kW at 1475 RPM (x3). \*Why choose for HOSBV? Were not only the largest used refrigeration specialist in Europe, but also, we deliver all equipment including an extensive test, warranty and industrial cleaning. \*Optional we can also perform a new paint job and arrange the logistics.

